



StellarMark is ideal for industrial applications. Not only the key components are sourced from world's leading suppliers to ensure output quality and stability, it also has the flexibility for manufactures to handle more complex jobs with our new G-Mark Library software. It constructively offers smart designs of password protection and error detection to prevent operators from making unnecessary mistakes, and detects problems without delay. StellarMark is built to solve all your marking problems and to achieve a higher level of your productivity.

Features:



RoHS Compliance

We are committed to make every effort to protect the environment. The StellarMark C Series is in compliant with the Restriction of Hazardous Substances Directive.



CE Certification

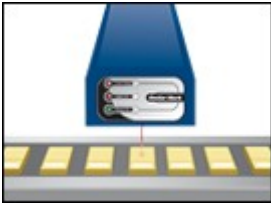
StellarMark complies with the essential safety requirement which set out in the European Directives.



G-Mark Library - Optional (New)

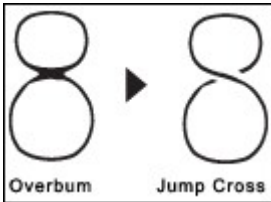
This programmable software can be used to customize functions by VB scripts. All the commands can be received in real time from master PC and allows the position to offset, it also permits angle rotation and text contents can be varied from time to time without extra editing process.

With G-Mark Library, the workflow of the marking process can be optimized and simplified at production line.



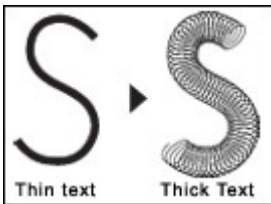
SmartMARK™(New)

Non-stop, "on-the-fly" marking of parts maximizes productivity. Precise laser can mark fast-moving parts while the conveyor is at constant or *inconstant speed.



Jump Cross (New)

This feature can effectively avoid over-burning problems caused by two overlapping lines in the same character.



Wobble Marking (New)

This function allows the true type text to be marked with thicker line.



360 Degrees Inside and Outside Marking (New)

The exceptional design offers precise 360 degrees marking on the outside or inside surface of cylindrical and torus-shaped parts.



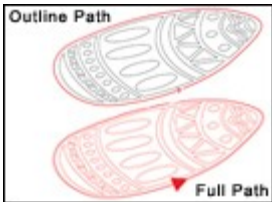
Error Indications

Error messages appear when the laser marker works incorrectly. Operators can be informed by the message and solve the problem immediately.



Secure Password System

Three-tier password security system (Operator, Programmer, Administrator levels) restricts unauthorized access to the production line.



SmartPOSITION™

Variable-speed, red dot pointer "preview" mode performs accurate and easy marking positioning on the marked part.



Automatic Serial Marking

With this feature, users can increase or decrease the serial part number automatically.



Font Marking Variations

This feature is able to mark a variety of character expressions via Arc Alignment, Angle Alignment, and Marking Direction.



Barcode Marking

14 types of 1D and 5 types of 2D barcodes (Data Matrix, PDF417, QR Code and Maxi Code) are available.



Logo and Image Marking

This function provides imported vector files and raster images up to 1000 dpi utilizing beam expander and performing exceptional image processing capabilities.

Specification:

C-12II A					
Stellar Mark Model No.		C-12II 010 A	C-12II050 A	C-12II 070 A	C-12II 140 A
Laser Source	Type	CO2, sealed-off			
	Output Power	12W			
	Wavelength	10.6 μm			
	Cooling	Air-cooled , no water chiller necessary			
Electrical Requirements	Power Supply	AC Auto Switching 115 V/230 V, 50-60 Hz, 1 PH			
	Power Consumption	740W			
Laser Marker Dimensions (L x W x H)		620 mm x 200 mm x 150 mm			
Control Unit Dimensions (L x W x H)		500 mm x 420 mm x 192.4 mm			
Laser Marker Weight		15 kg			
Control Unit Weight		17 kg			
Marking Area		10x10 mm	50x50 mm	70x70 mm	140x140 mm
Focal Length		44 mm	75 mm	105 mm	202 mm
Minimum Line Width		0.087 mm	0.115 mm	0.14 mm	0.28 mm
Resolutions		< 0.5 μm	< 2.2 μm	< 3 μm	< 6 μm
Repeatability		8 μRad	8 μRad	8 μRad	8 μRad
Maximum Marking Speed		10,000 mm / sec or 300 characters /sec**			
Operating system		Microsoft Windows 2000/XP (Desktop or Laptop PC)			
Safety		Class 4 (Class 3R available with safety door)			

C30II A

Stellar Mark Model No.		C-30II 010 A	C-30II 050 A	C-30II 070 A	C-30II 140 A	C-30II 200 A	C-30II 300 A
Laser Source	Type	CO2, sealed-off					
	Output Power	30W					
	Wavelength	10.6 μ m					
	Cooling	Air-cooled , no water chiller necessary					
Electrical Requirements	Power Supply	AC Auto Switching 115 V/230 V, 50-60 Hz, 1 PH					
	Power Consumption	1240W					
Laser Marker Dimensions (L x W x H)		620 mm x 200 mm x 150 mm					
Control Unit Dimensions (L x W x H)		500 mm x 420 mm x 192.4 mm					
Laser Marker Weight		17 kg					
Control Unit Weight		19 kg					
Marking Area		10x10 mm	50x50 mm	70x70 mm	140x140 mm	200x200 mm	300x300 mm
Focal Length		44 mm	75 mm	105 mm	202 mm	290 mm	435 mm
Minimum Line Width		0.087 mm	0.115 mm	0.14 mm	0.28 mm	0.41 mm	0.60 mm
Resolutions		< 0.5 μ m	< 2.2 μ m	< 3 μ m	< 6 μ m	< 9 μ m	< 13 μ m
Repeatability		8 μ Rad	8 μ Rad	8 μ Rad	8 μ Rad	8 μ Rad	8 μ Rad
Maximum Marking Speed		10,000 mm / sec or 300 characters /sec **					
Operating system		Microsoft Windows 2000/XP (Desktop or Laptop PC)					
Safety		Class 4 (Class 3R available with safety door)					